



NETYS PL

550 and 750 VA

a multi-socket UPS for easier connections

Single-phase UPS



NETYS 008 B 1 CAT

The solution for

- PC: LCD or CRT monitors, scanners, printers, etc.
- Cash registers
- Interactive terminals

An innovative solution

- Compact and modern design.
- Larger number of sockets adapted to IT environments.
- Can be used on the floor or on a desk, or wall-mounted.

Protection for all your needs

- 6 output sockets (Italian / Schuko or French standard) for easy distribution directly to your applications:
 - 4 sockets protected against power cuts and overvoltage, aimed at your most sensitive applications (central systems, monitors). The back-up time (up to 30 minutes) enables a standard PC configuration to be saved.
 - 2 sockets protected against overvoltage alone for use with less critical applications (1200 VA) and high absorption consumers (laser printers).

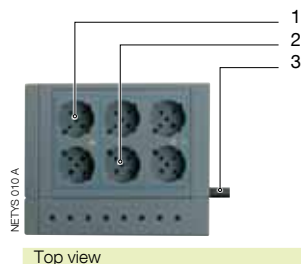
Protection for your 'phone line

- Protection for the telephone /modem / ADSL line (RJ11 connector) against the risk of on-line overvoltage.

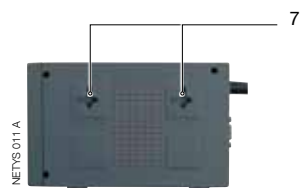
Easy to use

- Operating mode indicated by means of the mimic panel connected to the status indicator lights.
- Easy battery maintenance (user replaceable).

Connections



Top view



Side view



Rear view



Bottom view

1. Filtered output sockets
2. Inverter output sockets
3. Input socket and fuse
4. Telephone / modem line protections

5. RS232 / USB serial port
6. Battery replacement flap
7. Bracket for wall mounting



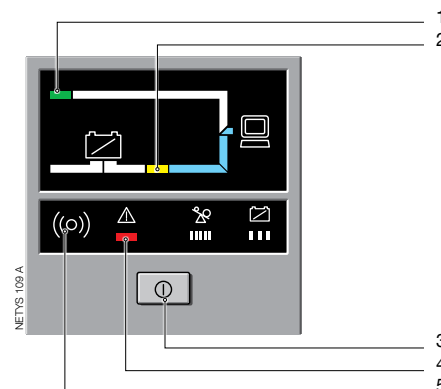
n° 6
French
std. sockets



n° 6
Italian/Schuko
std. sockets



Control panel



1. Normal operation
2. Operation with battery
3. On / Off
4. Alarm
5. Buzzer

Standard communication features

- **LOCAL VIEW:** ideal UPS monitoring and shutdown point-to-point solution for Windows® operating system.
- **UNI VISION:** software for the control and automatic shutdown of applications connected to Linux.

Technical data

NETYS PL		
Item code	NET550F-PL	NET750F-PL
Sn	550 VA	750 VA
Pn	330 VA	450 VA
Power (surge)	1200 VA	
Input/output	1/1	
INPUT		
Rated voltage	230 V	
Voltage tolerance	170 ÷ 260 V	
Rated frequency	50/60 Hz with automatic selection	
OUTPUT		
Rated voltage	230 V	
Rated frequency	50/60 Hz	
Sockets	6 sockets: n° 4 UPS and n° 2 surge (over voltage)	
Telephone protection	telephone line/modem/ADSL input/output: RJ11	
BATTERIES		
Type	sealed lead-acid maintenance free - expected life 3/5 years	
Back-up time ⁽¹⁾	20 min	30 min
COMMUNICATION		
Interfaces	RS232 and USB serial port (free software via Internet)	
UPS CABINET		
Dimensions W x D x H	160 x 210 x 125 mm	
Weight	5.3 kg	5.5 kg
STANDARDS		
Safety	EN 62040-1	
EMC	EN 62040-2	

(1) PC + 15" LCD monitor.